



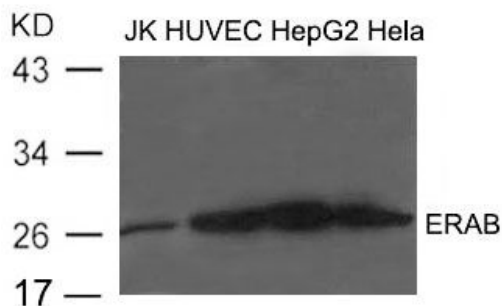
ERAB

Antibody

#24274

Catalog Number: 24274-1, 24274-2**Amount:** 50µg/50µl, 100µg/100µl**Swiss-Prot No. :**Q99714**Form of Antibody:** Rabbit IgG in phosphate buffered saline (without Mg²⁺ and Ca²⁺), pH 7.4, 150mM NaCl, 0.02% sodium azide and 50% glycerol.**Storage/Stability:** Store at -20°C/1 year**Immunogen:** The antiserum was produced against synthesized peptide derived from Human ERAB**Purification:** The antibody was affinity-purified from rabbit antiserum by affinity-chromatography using epitope-specific immunogen.**Specificity/Sensitivity:** ERAB Antibody detects endogenous levels of total ERAB**Reactivity:** Human, Mouse, Rat**Applications:**

Predicted MW: 27kd WB: 1:500-2000



Western blot analysis of extract from JK, HUVEC, HepG2 and HeLa cells using ERAB Antibody

Background :

Functions in mitochondrial tRNA maturation. Part of mitochondrial ribonuclease P, an enzyme composed of MRPP1/RG9MTD1, MRPP2/HSD17B10 and MRPP3/KIAA0391, which cleaves tRNA molecules in their 5'-ends. By interacting with intracellular amyloid-beta, it may contribute to the neuronal dysfunction associated with Alzheimer disease (AD).