



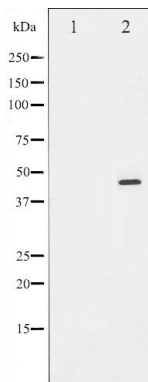
E2F1

Antibody

#24273

**Catalog Number:** 24273-1, 24273-2**Amount:** 50µg/50µl, 100µg/100µl**Swiss-Prot No. :** Q01094**Form of Antibody:** Rabbit IgG in phosphate buffered saline (without Mg<sup>2+</sup> and Ca<sup>2+</sup>), pH 7.4, 150mM NaCl, 0.02% sodium azide and 50% glycerol.**Storage/Stability:** Store at -20°C/1 year**Immunogen:** The antiserum was produced against synthesized peptide derived from Human E2F1**Purification:** The antibody was affinity-purified from rabbit antiserum by affinity-chromatography using epitope-specific immunogen.**Specificity/Sensitivity:** E2F1 Antibody detects endogenous levels of total E2F1**Reactivity:** Human, Mouse**Applications:**

Predicted MW: 47kd      WB: 1:500-2000



Western blot analysis of E2F1 expression in Etoposide treated HeLa whole cell lysates, The lane on the left is treated with the antigen-specific peptide.

**Background :**

The protein encoded by this gene is a member of the E2F family of transcription factors. The E2F family plays a crucial role in the control of cell cycle and action of tumor suppressor proteins and is also a target of the transforming proteins of small DNA tumor viruses.