



EFNB1/2 Antibody

#24272

Catalog Number: 24272-1, 24272-2

Amount: 50µg/50µl, 100µg/100µl

Swiss-Prot No. : P98172/52799

Form of Antibody: Rabbit IgG in phosphate buffered saline (without Mg²⁺ and Ca²⁺), pH 7.4, 150mM NaCl, 0.02% sodium azide and 50% glycerol.

Storage/Stability: Store at -20°C/1 year

Immunogen: The antiserum was produced against synthesized peptide derived from Human EFNB1/2

Purification: The antibody was affinity-purified from rabbit antiserum by affinity-chromatography using epitope-specific immunogen.

Specificity/Sensitivity: EFNB1/2 Antibody detects endogenous levels of total EFNB1/2

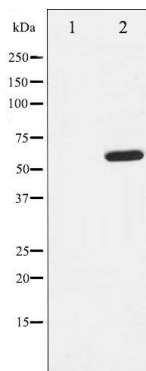
Reactivity: Human, Mouse, Rat

Applications:

Predicted MW: 59kd

WB: 1:500-2000

IHC: 1:50-200



Western blot analysis of EFNB1/2 expression in EGF treated 293 whole cell lysates, The lane on the left is treated with the antigen-specific peptide.

Background :

This gene encodes a member of the ephrin family. The encoded protein is a type I membrane protein and a ligand of Eph-related receptor tyrosine kinases. It may play a role in cell adhesion and function in the development or maintenance of the nervous system.