



EphA1

Mouse monoclonal Antibody

#54064

**Catalog Number:** 54064**Amount:** 100µg/100µl**Swiss-Prot No. :** P21709**Form of Antibody:** Purified mouse monoclonal in buffer containing 0.1M Tris-Glycine (pH 7.4, 150 mM NaCl) with 0.2% sodium azide, 50% glycerol**Storage/Stability:** Store at -20°C/1 year**Immunogen:** Purified recombinant human EphA1 protein fragments expressed in E.coli**Purification:** affinity-chromatography**Specificity/Sensitivity:** This antibody detects endogenous levels of EphA1 and does not cross-react with related proteins**Reactivity:** Human**Applications:**

Predicted MW: 108kd      WB:1:500-2000      IHC:1:200-1000

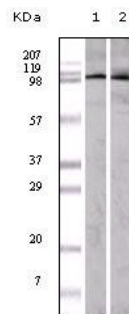


Figure 1: Western blot analysis using EphA1 mouse mAb against A549 (1) and HeLa (2) cell lysate.

## Background:

EPH receptor A1 (EphA1), with 976-amino acid protein (about 107 kDa), belongs to the ephrin receptor subfamily of the protein-tyrosine kinase family. The Eph subfamily represents the largest group of receptor protein tyrosine kinases identified to date and their ligands, the ephrins, can be subdivided into two major subclasses, ephrin-A and ephrin-B. Interaction of Eph receptor tyrosine kinases with their membrane bound ephrin ligands initiates bidirectional signaling events that regulate cell migratory and adhesive behavior, particularly in the nervous system. They have been implicated in various developmental processes, including axonal guidance, angiogenesis, morphogenesis and carcinogenesis.