



#24268

Catalog Number: 24268-1, 24268-2

Amount: 50µg/50µl, 100µg/100µl

Swiss-Prot No. : P07992

Form of Antibody: Rabbit IgG in phosphate buffered saline (without Mg²⁺ and Ca²⁺), pH 7.4, 150mM NaCl, 0.02% sodium azide and 50% glycerol.

Storage/Stability: Store at -20°C/1 year

Immunogen: The antiserum was produced against synthesized peptide derived from Human ERCC1

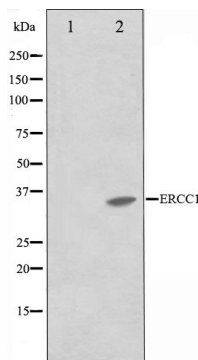
Purification: The antibody was affinity-purified from rabbit antiserum by affinity-chromatography using epitope-specific immunogen.

Specificity/Sensitivity: ERCC1 Antibody detects endogenous levels of total ERCC1

Reactivity: Human, Mouse, Rat

Applications:

Predicted MW: 36kd WB: 1:500-2000 IHC: 1:50-200



Western blot analysis on NIH-3T3 cell lysate using ERCC1 Antibody

Background :

ERCC1 a structure-specific DNA repair endonuclease responsible for the 5'-incision during DNA excision repair. Belongs to the ERCC1/RAD10/SWI10 family. Heterodimer composed of ERCC1 and XPF/ERCC4. Defects in ERCC1 are the cause of cerebro-oculo-facio-skeletal syndrome type 4, a degenerative autosomal recessive disorder of prenatal onset affecting the brain, eye and spinal cord.