



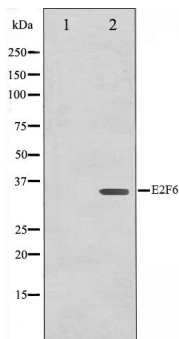
E2F6

Antibody

#24267

**Catalog Number:** 24267-1, 24267-2**Amount:** 50µg/50µl, 100µg/100µl**Swiss-Prot No. :** O75461**Form of Antibody:** Rabbit IgG in phosphate buffered saline (without Mg<sup>2+</sup> and Ca<sup>2+</sup>), pH 7.4, 150mM NaCl, 0.02% sodium azide and 50% glycerol.**Storage/Stability:** Store at -20°C/1 year**Immunogen:** The antiserum was produced against synthesized peptide derived from Human E2F6**Purification:** The antibody was affinity-purified from rabbit antiserum by affinity-chromatography using epitope-specific immunogen.**Specificity/Sensitivity:** E2F6 Antibody detects endogenous levels of total E2F6**Reactivity:** Human, Mouse, Rat**Applications:**

Predicted MW: 31kd    WB: 1:500-2000    IHC: 1:50-200



Western blot analysis on HepG2 cell lysate using E2F6 Antibody

**Background :**

E2F6 Inhibitor of E2F-dependent transcription. Binds DNA cooperatively with DP proteins through the E2 recognition site, 5'-TTTC[CG]CGC-3'. Has a preference for the 5'-TTTCCCGC-3' E2F recognition site. E2F-6 lacks the transcriptional activation and pocket protein binding domains. Appears to regulate a subset of E2F-dependent genes whose products are required for entry into the cell cycle but not for normal cell cycle progression. May silence expression via the recruitment of a chromatin remodeling complex containing histone H3-K9 methyltransferase activity.