



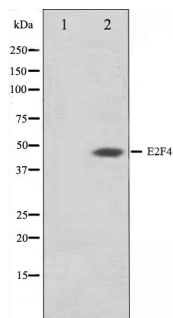
E2F4

Antibody

#24266

**Catalog Number:** 24266-1, 24266-2**Amount:** 50µg/50µl, 100µg/100µl**Swiss-Prot No. :** Q16254/15329**Form of Antibody:** Rabbit IgG in phosphate buffered saline (without Mg<sup>2+</sup> and Ca<sup>2+</sup>), pH 7.4, 150mM NaCl, 0.02% sodium azide and 50% glycerol.**Storage/Stability:** Store at -20°C/1 year**Immunogen:** The antiserum was produced against synthesized peptide derived from Human E2F4**Purification:** The antibody was affinity-purified from rabbit antiserum by affinity-chromatography using epitope-specific immunogen.**Specificity/Sensitivity:** E2F4 Antibody detects endogenous levels of total E2F4**Reactivity:** Human, Mouse, Rat**Applications:**

Predicted MW: 44kd    WB: 1:500-2000    IHC: 1:50-200



Western blot analysis on COS7 cell lysate using E2F4 Antibody

**Background :**

E2F4 Transcription activator that binds DNA cooperatively with DP proteins through the E2 recognition site, 5'-TTTC[CG]CGC- 3' found in the promoter region of a number of genes whose products are involved in cell cycle regulation or in DNA replication. The DRTF1/E2F complex functions in the control of cell-cycle progression from G1 to S phase. E2F-4 binds with high affinity to RBL1 and RBL2. In some instances, can also bind RB protein. Belongs to the E2F/DP family. Component of the DRTF1/E2F transcription factor complex. Binds cooperatively with DP-1 to E2F sites