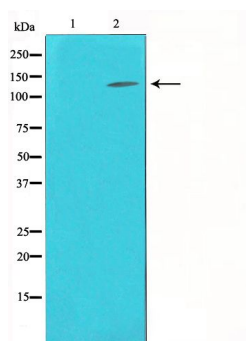




#24265

**Catalog Number:** 24265-1, 24265-2**Amount:** 50µg/50µl, 100µg/100µl**Swiss-Prot No. :** P29474**Form of Antibody:** Rabbit IgG in phosphate buffered saline (without Mg<sup>2+</sup> and Ca<sup>2+</sup>), pH 7.4, 150mM NaCl, 0.02% sodium azide and 50% glycerol.**Storage/Stability:** Store at -20°C/1 year**Immunogen:** The antiserum was produced against synthesized peptide derived from Human eNOS**Purification:** The antibody was affinity-purified from rabbit antiserum by affinity-chromatography using epitope-specific immunogen.**Specificity/Sensitivity:** eNOS Antibody detects endogenous levels of total eNOS**Reactivity:** Human, Mouse, Rat**Applications:**

Predicted MW: 140kd    WB: 1:500-2000    IHC: 1:50-200



Western blot analysis on K562 cell lysate using eNOS Antibody

**Background :**

eNOS endothelial constitutive nitric oxide synthase. Synthesizes nitric oxide (NO) from arginine and oxygen, which is implicated in vascular smooth muscle relaxation through a cGMP-mediated signal transduction pathway. NO mediates vascular endothelial growth factor (VEGF)-induced angiogenesis in coronary vessels and promotes blood clotting through the activation of platelets. Induced in humans by caloric restriction. Stimulated by calcium/calmodulin. Inhibited by NOSIP and NOSTRIN.