



DCLRE1C Antibody

#24264

Catalog Number: 24264-1, 24264-2

Amount: 50µg/50µl, 100µg/100µl

Swiss-Prot No. :Q96SD1

Form of Antibody: Rabbit IgG in phosphate buffered saline (without Mg²⁺ and Ca²⁺), pH 7.4, 150mM NaCl, 0.02% sodium azide and 50% glycerol.

Storage/Stability: Store at -20°C/1 year

Immunogen: The antiserum was produced against synthesized peptide derived from Human DCLRE1C

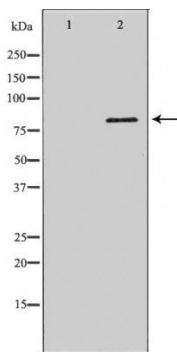
Purification: The antibody was affinity-purified from rabbit antiserum by affinity-chromatography using epitope-specific immunogen.

Specificity/Sensitivity: DCLRE1C Antibody detects endogenous levels of total DCLRE1C

Reactivity: Human, Mouse, Rat

Applications:

Predicted MW: 78kd WB: 1:500-2000 IHC: 1:50-200



Western blot analysis of extracts of various celllines, using DCLRE1C antibody.

Background :

This gene encodes a nuclear protein that is involved in V(D)J recombination and DNA repair. The protein has single-strand-specific 5'-3' exonuclease activity; it also exhibits endonuclease activity on 5' and 3' overhangs and hairpins when complexed with protein kinase, DNA-activated, catalytic polypeptide. Mutations in this gene cause Athabaskan-type severe combined immunodeficiency (SCIDA).