



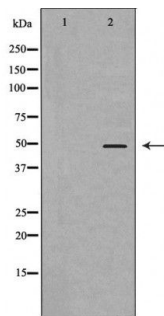
DRD4

Antibody

#24261

**Catalog Number:** 2426011, 24261-2**Amount:** 50µg/50µl, 100µg/100µl**Swiss-Prot No. :** P21917**Form of Antibody:** Rabbit IgG in phosphate buffered saline (without Mg<sup>2+</sup> and Ca<sup>2+</sup>), pH 7.4, 150mM NaCl, 0.02% sodium azide and 50% glycerol.**Storage/Stability:** Store at -20°C/1 year**Immunogen:** The antiserum was produced against synthesized peptide derived from Human DRD4**Purification:** The antibody was affinity-purified from rabbit antiserum by affinity-chromatography using epitope-specific immunogen.**Specificity/Sensitivity:** DRD4 Antibody detects endogenous levels of total DRD4**Reactivity:** Human, Mouse, Rat**Applications:**

Predicted MW: 48kd    WB: 1:500-2000    IHC: 1:50-200



Western blot analysis of extracts of Mouse skeletal muscle tissue lysate, using DRD4 antibody | Immunohistochemistry of paraffin-embedded human cervical cancer tissue using DRD4 antibody.

**Background :**

This gene encodes the D4 subtype of the dopamine receptor. The D4 subtype is a G-protein coupled receptor which inhibits adenylyl cyclase. It is a target for drugs which treat schizophrenia and Parkinson disease. Mutations in this gene have been associated with various behavioral phenotypes, including autonomic nervous system dysfunction, attention deficit/hyperactivity disorder, and the personality trait of novelty seeking. This gene contains a polymorphic number (2-10 copies) of tandem 48 nt repeats; the sequence shown contains four repeats.