



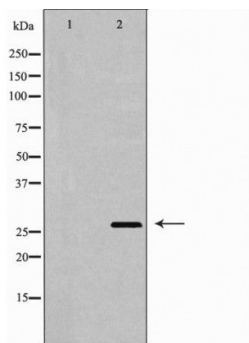
DIABLO

Antibody

#24259

Catalog Number: 24259-1, 24259-2**Amount:** 50µg/50µl, 100µg/100µl**Swiss-Prot No. :** Q9NR28**Form of Antibody:** Rabbit IgG in phosphate buffered saline (without Mg²⁺ and Ca²⁺), pH 7.4, 150mM NaCl, 0.02% sodium azide and 50% glycerol.**Storage/Stability:** Store at -20°C/1 year**Immunogen:** The antiserum was produced against synthesized peptide derived from Human DIABLO**Purification:** The antibody was affinity-purified from rabbit antiserum by affinity-chromatography using epitope-specific immunogen.**Specificity/Sensitivity:** DIABLO Antibody detects endogenous levels of total DIABLO**Reactivity:** Human, Mouse, Rat**Applications:**

Predicted MW: 27kd WB: 1:500-2000 IHC: 1:50-200



Western blot analysis of extracts of various celllines, using DIABLO antibody.

Background :

This gene encodes an inhibitor of apoptosis protein (IAP)-binding protein. The encoded mitochondrial protein enters the cytosol when cells undergo apoptosis, and allows activation of caspases by binding to inhibitor of apoptosis proteins. Overexpression of the encoded protein sensitizes tumor cells to apoptosis. A mutation in this gene is associated with young-adult onset of nonsyndromic deafness-64. Alternative splicing results in multiple transcript variants encoding different isoforms.