



#24260

Catalog Number: 24260-1, 24260-2

Amount: 50µg/50µl, 100µg/100µl

Swiss-Prot No. : P21728

Form of Antibody: Rabbit IgG in phosphate buffered saline (without Mg²⁺ and Ca²⁺), pH 7.4, 150mM NaCl, 0.02% sodium azide and 50% glycerol.

Storage/Stability: Store at -20°C/1 year

Immunogen: The antiserum was produced against synthesized peptide derived from Human DRD1

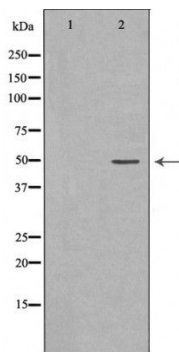
Purification: The antibody was affinity-purified from rabbit antiserum by affinity-chromatography using epitope-specific immunogen.

Specificity/Sensitivity: DRD1 Antibody detects endogenous levels of total DRD1

Reactivity: Human, Mouse, Rat

Applications:

Predicted MW: 49kd WB: 1:500-2000 IHC: 1:50-200



Western blot analysis of extracts of HeLa cellline, using DRD1 antibody | Immunohistochemistry of paraffin-embedded human thyroid cancer tissue using DRD1 antibody.

Background :

This gene encodes the D1 subtype of the dopamine receptor. The D1 subtype is the most abundant dopamine receptor in the central nervous system. This G-protein coupled receptor stimulates adenylyl cyclase and activates cyclic AMP-dependent protein kinases. D1 receptors regulate neuronal growth and development, mediate some behavioral responses, and modulate dopamine receptor D2-mediated events. Alternate transcription initiation sites result in two transcript variants of this gene.