



#24256

Catalog Number: 24256-1, 24256-2

Amount: 50µg/50µl, 100µg/100µl

Swiss-Prot No. : P07585

Form of Antibody: Rabbit IgG in phosphate buffered saline (without Mg²⁺ and Ca²⁺), pH 7.4, 150mM NaCl, 0.02% sodium azide and 50% glycerol.

Storage/Stability: Store at -20°C/1 year

Immunogen: The antiserum was produced against synthesized peptide derived from Human DCN

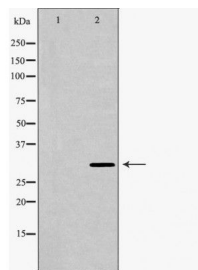
Purification: The antibody was affinity-purified from rabbit antiserum by affinity-chromatography using epitope-specific immunogen.

Specificity/Sensitivity: DCN Antibody detects endogenous levels of total DCN

Reactivity: Human, Mouse, Rat

Applications:

Predicted MW: 30kd WB: 1:500-2000 IHC: 1:50-200



Western blot analysis of extracts of various celllines, using DCN antibody.

Background :

The protein encoded by this gene is a small cellular or pericellular matrix proteoglycan that is closely related in structure to biglycan protein. The encoded protein and biglycan are thought to be the result of a gene duplication. This protein is a component of connective tissue, binds to type I collagen fibrils, and plays a role in matrix assembly. It contains one attached glycosaminoglycan chain. This protein is capable of suppressing the growth of various tumor cell lines. There are multiple alternatively spliced transcript variants known for this gene. This gene is a candidate gene for Marfan syndrome.