



CDC5L Antibody

#24249

Catalog Number: 24249-1, 24249-2

Amount: 50µg/50µl, 100µg/100µl

Swiss-Prot No. : Q99459

Form of Antibody: Rabbit IgG in phosphate buffered saline (without Mg²⁺ and Ca²⁺), pH 7.4, 150mM NaCl, 0.02% sodium azide and 50% glycerol.

Storage/Stability: Store at -20°C/1 year

Immunogen: The antiserum was produced against synthesized peptide derived from Human CDC5L

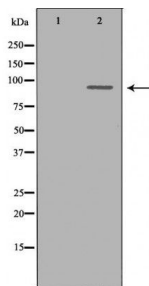
Purification: The antibody was affinity-purified from rabbit antiserum by affinity-chromatography using epitope-specific immunogen.

Specificity/Sensitivity: CDC5L Antibody detects endogenous levels of total CDC5L

Reactivity: Human, Mouse, Rat

Applications:

Predicted MW: 92kd WB: 1:500-2000 IHC: 1:50-200



Western blot analysis of extracts of various celllines, using CDC5L antibody.

Background :

The protein encoded by this gene shares a significant similarity with *Schizosaccharomyces pombe* cdc5 gene product, which is a cell cycle regulator important for G2/M transition. This protein has been demonstrated to act as a positive regulator of cell cycle G2/M progression. It was also found to be an essential component of a non-snRNA spliceosome, which contains at least five additional protein factors and is required for the second catalytic step of pre-mRNA splicing.