



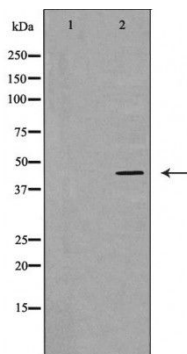
CX3CR1

Antibody

#24247

Catalog Number: 24247-1, 24247-2**Amount:** 50µg/50µl, 100µg/100µl**Swiss-Prot No. :** P49238**Form of Antibody:** Rabbit IgG in phosphate buffered saline (without Mg²⁺ and Ca²⁺), pH 7.4, 150mM NaCl, 0.02% sodium azide and 50% glycerol.**Storage/Stability:** Store at -20°C/1 year**Immunogen:** The antiserum was produced against synthesized peptide derived from Human CX3CR1**Purification:** The antibody was affinity-purified from rabbit antiserum by affinity-chromatography using epitope-specific immunogen.**Specificity/Sensitivity:** CX3CR1 Antibody detects endogenous levels of total CX3CR1**Reactivity:** Human, Mouse, Rat**Applications:**

Predicted MW: 44kd WB: 1:500-2000



Western blot analysis of extracts of mouse fetal muscle tissue lysate, using CX3CR1 antibody.

Background :

Fractalkine is a transmembrane protein and chemokine involved in the adhesion and migration of leukocytes. The protein encoded by this gene is a receptor for fractalkine. The encoded protein also is a coreceptor for HIV-1, and some variations in this gene lead to increased susceptibility to HIV-1 infection and rapid progression to AIDS. Four transcript variants encoding two different isoforms have been found for this gene.