



CUL4A Antibody

#24246

Catalog Number: 24246-1, 24246-2

Amount: 50µg/50µl, 100µg/100µl

Swiss-Prot No. :Q13619

Form of Antibody: Rabbit IgG in phosphate buffered saline (without Mg²⁺ and Ca²⁺), pH 7.4, 150mM NaCl, 0.02% sodium azide and 50% glycerol.

Storage/Stability: Store at -20°C/1 year

Immunogen: The antiserum was produced against synthesized peptide derived from Human CUL4A

Purification: The antibody was affinity-purified from rabbit antiserum by affinity-chromatography using epitope-specific immunogen.

Specificity/Sensitivity: CUL4A Antibody detects endogenous levels of total CUL4A

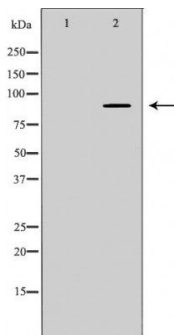
Reactivity: Human, Mouse, Rat

Applications:

Predicted MW: 88kd

WB: 1:500-2000

IHC: 1:50-200



Western blot analysis of extracts of various celllines, using CUL4A antibody. | Immunohistochemistry of paraffin-embedded human cervical cancer tissue using CUL4A antibody.

Background : CUL4A is the ubiquitin ligase component of a multimeric complex involved in the degradation of DNA damage-response proteins. Core component of multiple cullin-RING-based E3 ubiquitin-protein ligase complexes which mediate the ubiquitination and subsequent proteasomal degradation of target proteins. As a scaffold protein may contribute to catalysis through positioning of the substrate and the ubiquitin-conjugating enzyme. The E3 ubiquitin-protein ligase activity of the complex is dependent on the neddylation of the cullin subunit and is inhibited by the association of the deneddylated cullin subunit with TIP120A/CAND1. The functional specificity of the E3 ubiquitin-protein ligase complex depends on the variable substrate recognition component. DCX (DET1-COP1) directs ubiquitination of JUN. DCX (DDB2) directs ubiquitination of XPC.