



## CTSE Antibody

#24243

**Catalog Number:** 24243-1, 24243-2

**Amount:** 50µg/50µl, 100µg/100µl

**Swiss-Prot No. :** P14091

**Form of Antibody:** Rabbit IgG in phosphate buffered saline (without Mg<sup>2+</sup> and Ca<sup>2+</sup>), pH 7.4, 150mM NaCl, 0.02% sodium azide and 50% glycerol.

**Storage/Stability:** Store at -20°C/1 year

**Immunogen:** The antiserum was produced against synthesized peptide derived from Human CTSE

**Purification:** The antibody was affinity-purified from rabbit antiserum by affinity-chromatography using epitope-specific immunogen.

**Specificity/Sensitivity:** CTSE Antibody detects endogenous levels of total CTSE

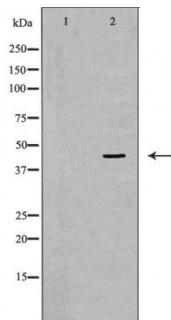
**Reactivity:** Human, Mouse, Rat

### Applications:

Predicted MW: 43kd

WB: 1:500-2000

IHC: 1:50-200



Western blot analysis of extracts of MGC-803 cellline, using CTSE antibody. | Immunohistochemistry of paraffin-embedded human pancreatic cancer tissue using CTSE antibody.

**Background :** The protein encoded by this gene is a gastric aspartyl protease that functions as a disulfide-linked homodimer. This protease, which is a member of the peptidase C1 family, has a specificity similar to that of pepsin A and cathepsin D. It is an intracellular proteinase that does not appear to be involved in the digestion of dietary protein and is found in highest concentration in the surface of epithelial mucus-producing cells of the stomach. It is the first aspartic proteinase expressed in the fetal stomach and is found in more than half of gastric cancers. It appears, therefore, to be an oncofetal antigen. Transcript variants utilizing alternative polyadenylation signals and two transcript variants encoding different isoforms exist for this gene.