



CSNK2A2 Antibody

#24226

Catalog Number: 24226-1, 24226-2

Amount: 50µg/50µl, 100µg/100µl

Swiss-Prot No. : P19784

Form of Antibody: Rabbit IgG in phosphate buffered saline (without Mg²⁺ and Ca²⁺), pH 7.4, 150mM NaCl, 0.02% sodium azide and 50% glycerol.

Storage/Stability: Store at -20°C/1 year

Immunogen: The antiserum was produced against synthesized peptide derived from Human CSNK2A2

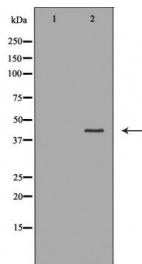
Purification: The antibody was affinity-purified from rabbit antiserum by affinity-chromatography using epitope-specific immunogen.

Specificity/Sensitivity: CSNK2A2 Antibody detects endogenous levels of total CSNK2A2

Reactivity: Human, Mouse, Rat

Applications:

Predicted MW: 41kd WB: 1:500-2000 IHC: 1:50-200



Western blot analysis of extracts of various cell lines, using CSNK2A2 antibody.

Background :

Casein kinase I (also designated CKI) and casein kinase II (CKII) compose a family of serine/threonine protein kinases which are present in all eukaryotes examined to date. Casein kinase I family members, which include casein kinase I α , I β , I γ and I ϵ , have been implicated in the control of cytoplasmic and nuclear processes, including DNA replication and repair. CKII is usually expressed as a tetrameric complex consisting of either an $\alpha_2\beta_2$ or $\alpha\beta\gamma_2$ structure. The α catalytic subunit is stimulated by the β regulatory subunit, which undergoes autophosphorylation. Casein kinase II activity is high in the cytosol and nucleus of proliferating and differentiating cells. Casein kinase II is known to phosphorylate more than 100 different substrates including nuclear oncoproteins, transcription factors and enzymes involved in DNA metabolism.