



## CTSD Antibody

#24225

**Catalog Number:** 24225-1, 24225-2

**Amount:** 50µg/50µl, 100µg/100µl

**Swiss-Prot No. :** P07339

**Form of Antibody:** Rabbit IgG in phosphate buffered saline (without Mg<sup>2+</sup> and Ca<sup>2+</sup>), pH 7.4, 150mM NaCl, 0.02% sodium azide and 50% glycerol.

**Storage/Stability:** Store at -20°C/1 year

**Immunogen:** The antiserum was produced against synthesized peptide derived from Human CTSD

**Purification:** The antibody was affinity-purified from rabbit antiserum by affinity-chromatography using epitope-specific immunogen.

**Specificity/Sensitivity:** CTSD Antibody detects endogenous levels of total CTSD

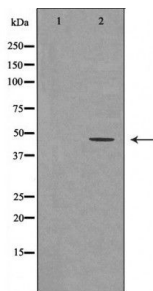
**Reactivity:** Human, Mouse, Rat

### Applications:

Predicted MW: 45kd

WB: 1:500-2000

IHC: 1:50-200



Western blot analysis of extracts of various celllines, using CTSD antibody.

### Background :

This gene encodes a lysosomal aspartyl protease composed of a dimer of disulfide-linked heavy and light chains, both produced from a single protein precursor. This proteinase, which is a member of the peptidase C1 family, has a specificity similar to but narrower than that of pepsin A. Transcription of this gene is initiated from several sites, including one which is a start site for an estrogen-regulated transcript. Mutations in this gene are involved in the pathogenesis of several diseases, including breast cancer and possibly Alzheimer disease.