



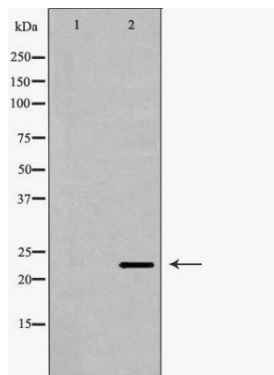
#24221

Catalog Number: 24221-1, 24221-2**Amount:** 50µg/50µl, 100µg/100µl**Swiss-Prot No. :** P78560**Form of Antibody:** Rabbit IgG in phosphate buffered saline (without Mg²⁺ and Ca²⁺), pH 7.4, 150mM NaCl, 0.02% sodium azide and 50% glycerol.**Storage/Stability:** Store at -20°C/1 year**Immunogen:** The antiserum was produced against synthesized peptide derived from Human CRADD**Purification:** The antibody was affinity-purified from rabbit antiserum by affinity-chromatography using epitope-specific immunogen.**Specificity/Sensitivity:** CRADD Antibody detects endogenous levels of total CRADD**Reactivity:** Human, Mouse, Rat**Applications:**

Predicted MW: 23kd

WB: 1:500-2000

IHC: 1:50-200



Western blot analysis of K562 cell lysate using CRADD antibody.

Background :

The protein encoded by this gene is a death domain (CARD/DD)-containing protein and has been shown to induce cell apoptosis. Through its CARD domain, this protein interacts with, and thus recruits, caspase 2/ICH1 to the cell death signal transduction complex that includes tumor necrosis factor receptor 1 (TNFR1A), RIPK1/RIP kinase, and numbers of other CARD domain-containing proteins.