



Cyr61 Antibody

#24219

Catalog Number: 24219-1, 24219-2

Amount: 50µg/50µl, 100µg/100µl

Swiss-Prot No. : O00622

Form of Antibody: Rabbit IgG in phosphate buffered saline (without Mg²⁺ and Ca²⁺), pH 7.4, 150mM NaCl, 0.02% sodium azide and 50% glycerol.

Storage/Stability: Store at -20°C/1 year

Immunogen: The antiserum was produced against synthesized peptide derived from Human Cyr61

Purification: The antibody was affinity-purified from rabbit antiserum by affinity-chromatography using epitope-specific immunogen.

Specificity/Sensitivity: Cyr61 Antibody detects endogenous levels of total Cyr61

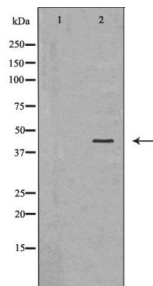
Reactivity: Human

Applications:

Predicted MW: 42kd

WB:1:500-2000

IHC:1:50-200



Western blot analysis of Jurkat cell lysate using CYR61 antibody.

Background :

Cyr61 is a secreted heparin binding protein, encoded by a growth factor-inducible immediate-early gene, that associates with the extracellular matrix and connective tissue. Cyr61 is a member of a distinct family of angiogenic and vasculogenic regulators designated CCN proteins, which includes connective tissue growth factor (CTGF) and the mouse Cyr61 homolog, Fisp12. As an angiogenic inducer, Cyr61 binds to the cell surface receptor Integrin α V/ β 3, where it then stimulates cell adhesion and migration and promotes DNA synthesis of human vascular endothelial cells. Expression of Cyr61 is elevated during vessel growth, wound healing and chondrocyte differentiation. Cyr61 is also detected in a wide variety of tumors as it induces tumor growth and functions as a marker of tumor progression.