



## CUL3 Antibody

#24216

**Catalog Number:** 24216-1, 24216-2

**Amount:** 50µg/50µl, 100µg/100µl

**Swiss-Prot No. :**Q13618

**Form of Antibody:** Rabbit IgG in phosphate buffered saline (without Mg<sup>2+</sup> and Ca<sup>2+</sup>), pH 7.4, 150mM NaCl, 0.02% sodium azide and 50% glycerol.

**Storage/Stability:** Store at -20°C/1 year

**Immunogen:** The antiserum was produced against synthesized peptide derived from Human CUL3

**Purification:** The antibody was affinity-purified from rabbit antiserum by affinity-chromatography using epitope-specific immunogen.

**Specificity/Sensitivity:** CUL3 Antibody detects endogenous levels of total CUL3

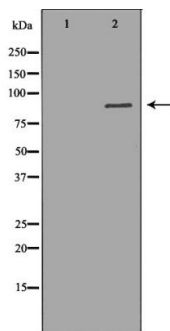
**Reactivity:** Human, Mouse, Rat

### Applications:

Predicted MW: 89kd

WB: 1:500-2000

IHC: 1:50-200



Western blot analysis of Jurkat cell lysate using CUL3 antibody.

### Background :

CUL3 (Cullin-3) is a member of the cullin-based ubiquitin ligase family. By interacting with Hrt1 and BTB domain containing proteins, the complex functions as a CUL3-based E3 ligase to bring specific substrates to ubiquitinylation and degradation. The CUL3 complex has been shown to target many substrates involved in cell cycle progression, transcription, development and differentiation.