



Catenin- γ Antibody

#24195

Catalog Number: 24195-1, 24195-2

Amount: 50 μ g/50 μ l, 100 μ g/100 μ l

Swiss-Prot No. : P14923

Form of Antibody: Rabbit IgG in phosphate buffered saline (without Mg²⁺ and Ca²⁺), pH 7.4, 150mM NaCl, 0.02% sodium azide and 50% glycerol.

Storage/Stability: Store at -20°C/1 year

Immunogen: The antiserum was produced against synthesized peptide derived from Human Catenin- γ

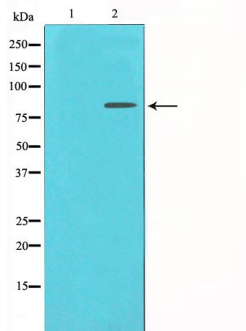
Purification: The antibody was affinity-purified from rabbit antiserum by affinity-chromatography using epitope-specific immunogen.

Specificity/Sensitivity: Catenin- γ Antibody detects endogenous levels of total Catenin- γ

Reactivity: Human, Mouse, Rat

Applications:

Predicted MW: 82kd WB: 1:500-2000 IHC: 1:50-200



Western blot analysis on HeLa cell lysate using Catenin-gamma Antibody

Background :

desmoplakin 3 Common junctional plaque protein. The membrane-associated plaques are architectural elements in an important strategic position to influence the arrangement and function of both the cytoskeleton and the cells within the tissue. The presence of plakoglobin in both the desmosomes and in the intermediate junctions suggests that it plays a central role in the structure and function of submembranous plaques. Acts as a substrate for VE-PTP and is required by it to stimulate VE-cadherin function in endothelial cells. Belongs to the beta-catenin family. Homodimer. Interacts with MUC1.