



Caspase8 (Phospho-Ser347) Antibody

#14129

Catalog Number: 14129-1, 14129-2

Amount: 50µg/50µl, 100µg/100µl

Swiss-Prot No. :Q14790

Form of Antibody: Rabbit IgG in phosphate buffered saline (without Mg²⁺ and Ca²⁺), pH 7.4, 150mM NaCl, 0.02% sodium azide and 50% glycerol.

Storage/Stability: Store at -20°C/1 year

Immunogen: The antiserum was produced against synthesized phosphopeptide derived from Human Caspase8 around the phosphorylation site of Serine 347

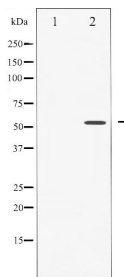
Purification: The antibody was affinity-purified from rabbit antiserum by affinity-chromatography using epitope-specific immunogen.

Specificity/Sensitivity: Caspase8 (Phospho-Ser347) Antibody detects endogenous levels of Caspase8 only when phosphorylated at Serine 347

Reactivity: Human, Rat

Applications:

Predicted MW: 47kd WB:1:500~1:2000 IHC:1:50-200



Western blot analysis of Caspase 8 phosphorylation expression in Jurkat whole cell lysates, The lane on the left is treated with the antigen-specific peptide.

Background :

This gene encodes a protein that is a member of the cysteine-aspartic acid protease (caspase) family. Sequential activation of caspases plays a central role in the execution-phase of cell apoptosis. Caspases exist as inactive proenzymes composed of a prodomain, a large protease subunit, and a small protease subunit. Activation of caspases requires proteolytic processing at conserved internal aspartic residues to generate a heterodimeric enzyme consisting of the large and small subunits.