



## Cleaved-Caspase3 Antibody

#24187

**Catalog Number:** 24187-1, 24187-2

**Amount:** 50µg/50µl, 100µg/100µl

**Swiss-Prot No. :** P42574

**Form of Antibody:** Rabbit IgG in phosphate buffered saline (without Mg<sup>2+</sup> and Ca<sup>2+</sup>), pH 7.4, 150mM NaCl, 0.02% sodium azide and 50% glycerol.

**Storage/Stability:** Store at -20°C/1 year

**Immunogen:** The antiserum was produced against synthesized peptide derived from Human Caspase3

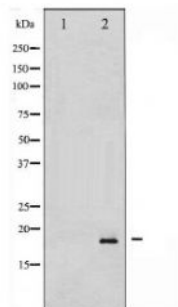
**Purification:** The antibody was affinity-purified from rabbit antiserum by affinity-chromatography using epitope-specific immunogen.

**Specificity/Sensitivity:** Caspase 3 (p17, Cleaved-Asp175) Antibody detects endogenous levels of fragment of activated Caspase 3 resulting from cleavage adjacent to Asp175.

**Reactivity:** Human, Mouse, Rat

**Applications:**

Predicted MW: 17kd      WB: 1:500~1:2000      IHC: 1:50-200



Western blot analysis of extracts from COLO cells, using Cleaved-caspase 3. The lane on the left is treated with the synthesized peptide.

**Background :** This gene encodes a protein which is a member of the cysteine-aspartic acid protease (caspase) family. Sequential activation of caspases plays a central role in the execution-phase of cell apoptosis. Caspases exist as inactive proenzymes which undergo proteolytic processing at conserved aspartic residues to produce 2 subunits, large and small, that dimerize to form the active enzyme.