



Caspase8 Antibody

#24186

Catalog Number: 24186-1, 24186-2

Amount: 50µg/50µl, 100µg/100µl

Swiss-Prot No. :Q14790

Form of Antibody: Rabbit IgG in phosphate buffered saline (without Mg²⁺ and Ca²⁺), pH 7.4, 150mM NaCl, 0.02% sodium azide and 50% glycerol.

Storage/Stability: Store at -20°C/1 year

Immunogen: The antiserum was produced against synthesized peptide derived from Human Caspase8

Purification: The antibody was affinity-purified from rabbit antiserum by affinity-chromatography using epitope-specific immunogen.

Specificity/Sensitivity: Caspase8 antibody detects endogenous levels of total Caspase8 protein

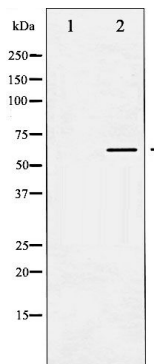
Reactivity: Human, Mouse, Rat

Applications:

Predicted MW: 55kd

WB: 1:500~1:2000

IHC: 1:50-200



Western blot analysis of Caspase 8 expression in TNF- α treated NIH-3T3 whole cell lysates, The lane on the left is treated with the antigen-specific peptide.

Background :

This gene encodes a protein that is a member of the cysteine-aspartic acid protease (caspase) family. Sequential activation of caspases plays a central role in the execution-phase of cell apoptosis. Caspases exist as inactive proenzymes composed of a prodomain, a large protease subunit, and a small protease subunit. Activation of caspases requires proteolytic processing at conserved internal aspartic residues to generate a heterodimeric enzyme consisting of the large and small subunits.