



Caspase3 (Phospho-Ser150) Antibody

#14127

Catalog Number: 14127-1, 14127-2

Amount: 50µg/50µl, 100µg/100µl

Swiss-Prot No. : P42574

Form of Antibody: Rabbit IgG in phosphate buffered saline (without Mg²⁺ and Ca²⁺), pH 7.4, 150mM NaCl, 0.02% sodium azide and 50% glycerol.

Storage/Stability: Store at -20°C/1 year

Immunogen: The antiserum was produced against synthesized phosphopeptide derived from Human Caspase3 around the phosphorylation site of Serine 150

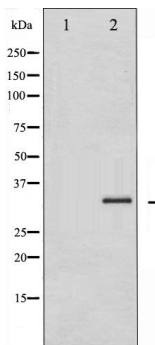
Purification: The antibody was affinity-purified from rabbit antiserum by affinity-chromatography using epitope-specific immunogen.

Specificity/Sensitivity: Caspase3 (Phospho-Ser150) Antibody detects endogenous levels of Caspase3 only when phosphorylated at Serine 150

Reactivity: Human, Mouse, Rat

Applications:

Predicted MW: 34kd WB: 1:500~1:2000 IHC: 1:50-200



Western blot analysis of Caspase 3 phosphorylation expression in Etoposide treated Jurkat whole cell lysates. The lane on the left is treated with the antigen-specific peptide.

Background :

This gene encodes a protein which is a member of the cysteine-aspartic acid protease (caspase) family. Sequential activation of caspases plays a central role in the execution-phase of cell apoptosis. Caspases exist as inactive proenzymes which undergo proteolytic processing at conserved aspartic residues to produce 2 subunits, large and small, that dimerize to form the active enzyme.