



Caspase6 Antibody

#24193

Catalog Number: 24193-1, 24193-2

Amount: 50µg/50µl, 100µg/100µl

Swiss-Prot No. : P55212

Form of Antibody: Rabbit IgG in phosphate buffered saline (without Mg²⁺ and Ca²⁺), pH 7.4, 150mM NaCl, 0.02% sodium azide and 50% glycerol.

Storage/Stability: Store at -20°C/1 year

Immunogen: The antiserum was produced against synthesized peptide derived from Human Caspase6

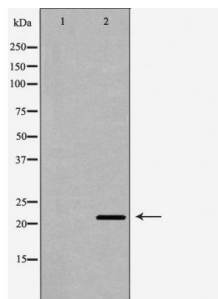
Purification: The antibody was affinity-purified from rabbit antiserum by affinity-chromatography using epitope-specific immunogen.

Specificity/Sensitivity: Caspase6 Antibody detects endogenous levels of total Caspase6

Reactivity: Human, Mouse, Rat

Applications:

Predicted MW: 22kd WB: 1:500-2000 IHC: 1:50-200



Western blot analysis of extracts of Jurkat cell lines, using CASP6 antibody.

Background :

Caspase-6 (Mch2) is one of the major executioner caspases functioning in cellular apoptotic processes (1,2). Upon apoptotic stimulation, initiator caspases such as caspase-9 are cleaved and activated (3). The activated upstream caspases further process downstream executioner caspases, such as caspase-3 and caspase-6, by cleaving them into large and small subunits, thereby initiating a caspase cascade leading to apoptosis (4,5). One of the major targets for caspase-6 is the membrane associated protein lamin A (6). The cleavage of this protein causes cell membrane malfunction, membrane blebbing and eventual cell death.