



Caspase7 Antibody

#24192

Catalog Number: 24192-1, 24192-2

Amount: 50µg/50µl, 100µg/100µl

Swiss-Prot No. : P55210

Form of Antibody: Rabbit IgG in phosphate buffered saline (without Mg²⁺ and Ca²⁺), pH 7.4, 150mM NaCl, 0.02% sodium azide and 50% glycerol.

Storage/Stability: Store at -20°C/1 year

Immunogen: The antiserum was produced against synthesized peptide derived from Human Caspase7

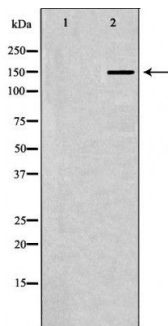
Purification: The antibody was affinity-purified from rabbit antiserum by affinity-chromatography using epitope-specific immunogen.

Specificity/Sensitivity: Caspase7 Antibody detects endogenous levels of total Caspase7

Reactivity: Human, Mouse, Rat

Applications:

Predicted MW: 151kd WB:1:500-2000 IHC:1:50-200



Western blot analysis of extracts of various celllines, using Caspase7 antibody.

Background :

Caspase-7 (CMH-1, Mch3, ICE-LAP3) has been identified as a major contributor to the execution of apoptosis . Caspase-7, like caspase-3, is an effector caspase that is responsible for cleaving downstream substrates such as (ADP-ribose) polymerase and PARP . During apoptosis, caspase-7 is activated through proteolytic processing by upstream caspases at Asp23, Asp198, and Asp206 to produce the mature subunits . Similar to caspases-2 and -3, caspase-7 preferentially cleaves substrates following the recognition sequence DEVD .