



Caspase1 (Phospho-Ser376) Antibody

#14130

Catalog Number: 14130-1, 14130-2

Amount: 50µg/50µl, 100µg/100µl

Swiss-Prot No. : P29466

Form of Antibody: Rabbit IgG in phosphate buffered saline (without Mg²⁺ and Ca²⁺), pH 7.4, 150mM NaCl, 0.02% sodium azide and 50% glycerol.

Storage/Stability: Store at -20°C/1 year

Immunogen: The antiserum was produced against synthesized phosphopeptide derived from Human Caspase1 around the phosphorylation site of Serine 376

Purification: The antibody was affinity-purified from rabbit antiserum by affinity-chromatography using epitope-specific immunogen.

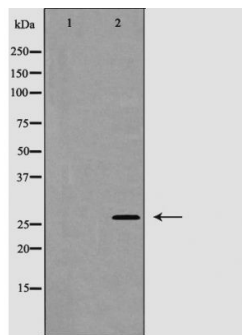
Specificity/Sensitivity: Caspase1 (Phospho-Ser376) Antibody detects endogenous levels of Caspase1 only when phosphorylated at Serine 376

Reactivity: Human, Mouse

Applications:

Predicted MW: 27kd

WB: 1:500~1:2000



Western blot analysis of Caspase 1 (Phospho-Ser376) expression in 293 cells

Background :

Thiol protease that cleaves IL-1 beta between an Asp and an Ala, releasing the mature cytokine which is involved in a variety of inflammatory processes. Important for defense against pathogens. Cleaves and activates sterol regulatory element binding proteins (SREBPs). Can also promote apoptosis.