



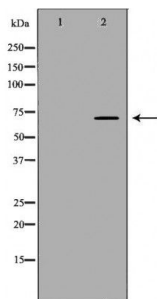
#24178

**Catalog Number:** 24178-1, 24178-2**Amount:** 50µg/50µl, 100µg/100µl**Swiss-Prot No. :** Q9Y297**Form of Antibody:** Rabbit IgG in phosphate buffered saline (without Mg<sup>2+</sup> and Ca<sup>2+</sup>), pH 7.4, 150mM NaCl, 0.02% sodium azide and 50% glycerol.**Storage/Stability:** Store at -20°C/1 year**Immunogen:** The antiserum was produced against synthesized peptide derived from Human BTRC**Purification:** The antibody was affinity-purified from rabbit antiserum by affinity-chromatography using epitope-specific immunogen.**Specificity/Sensitivity:** BTRC antibody detects endogenous levels of total BTRC protein**Reactivity:** Human, Mouse, Rat**Applications:**

Predicted MW: 69kd

WB: 1:500~1:2000

IHC: 1:50-200



Western blot analysis of extracts of Kidney cell line, using BTRC antibody.

**Background :**

$\beta$ -transducin repeat-containing protein ( $\beta$ -TrCP or FBW1A) is an F-box family protein characterized by the presence of the protein-protein mediating F-box domain first described in cyclin F. F-box proteins act as substrate adaptors that target proteins containing a specific phosphorylated sequence element, referred to as a phosphodegron, to the SCF E3 ubiquitin ligase complex for ubiquitination.  $\beta$ -TrCP targets many important proteins with diverse functions, such as p53, H-Ras, Smad4, I $\kappa$ B $\alpha$ ,  $\beta$ -catenin, and the cell cycle checkpoint protein claspin, for ubiquitin-mediated degradation. Research studies have shown that inhibition of  $\beta$ -TrCP expression has a demonstrated benefit in the treatment of prostate cancer.