



## Caspase9 (Cleaved-Asp330) Antibody

#24189

**Catalog Number:** 24189-1, 24189-2

**Amount:** 50µg/50µl, 100µg/100µl

**Swiss-Prot No. :** P55211

**Form of Antibody:** Rabbit IgG in phosphate buffered saline (without Mg<sup>2+</sup> and Ca<sup>2+</sup>), pH 7.4, 150mM NaCl, 0.02% sodium azide and 50% glycerol.

**Storage/Stability:** Store at -20°C/1 year

**Immunogen:** The antiserum was produced against synthesized peptide derived from Human Caspase9(Cleaved-Asp330)

**Purification:** The antibody was affinity-purified from rabbit antiserum by affinity-chromatography using epitope-specific immunogen.

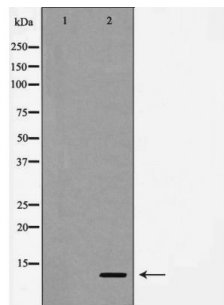
**Specificity/Sensitivity:** Caspase 9 (Cleaved-Asp330) Antibody detects endogenous levels of total Caspase 9(Cleaved-Asp330)

**Reactivity:** Human, Mouse, Rat

### Applications:

Predicted MW: 10kd

IHC: 1:50-200



1/50 dilution staining Caspase 9 in human lung carcinoma by Immunohistochemistry,

### Background :

Involved in the activation cascade of caspases responsible for apoptosis execution. Binding of caspase-9 to Apaf-1 leads to activation of the protease which then cleaves and activates caspase-3. Proteolytically cleaves poly(ADP-ribose) polymerase (PARP).