



## BRCA1 Antibody

#24171

**Catalog Number:** 24171-1, 24171-2

**Amount:** 50µg/50µl, 100µg/100µl

**Swiss-Prot No. :** P38398

**Form of Antibody:** Rabbit IgG in phosphate buffered saline (without Mg<sup>2+</sup> and Ca<sup>2+</sup>), pH 7.4, 150mM NaCl, 0.02% sodium azide and 50% glycerol.

**Storage/Stability:** Store at -20°C/1 year

**Immunogen:** The antiserum was produced against synthesized peptide derived from Human BRCA1

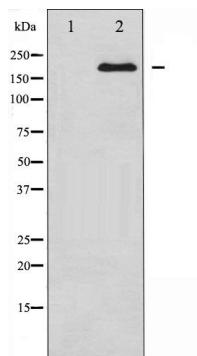
**Purification:** The antibody was affinity-purified from rabbit antiserum by affinity-chromatography using epitope-specific immunogen.

**Specificity/Sensitivity:** BRCA1 antibody detects endogenous levels of total BRCA1 protein

**Reactivity:** Human, Rat

**Applications:**

Predicted MW: 220kd      WB:1:500~1:2000      IHC:1:50-200



Western blot analysis of BRCA1 expression in whole cell lysates, The lane on the left is treated with the antigen-specific peptide.

**Background :**

This gene encodes a nuclear phosphoprotein that plays a role in maintaining genomic stability and acts as a tumor suppressor. The encoded protein combines with other tumor suppressors, DNA damage sensors, and signal transducers to form a large multi-subunit protein complex known as BASC for BRCA1-associated genome surveillance complex.