



AZGP1 Antibody

#24165

Catalog Number: 24165-1, 24165-2

Amount: 50µg/50µl, 100µg/100µl

Swiss-Prot No. : P25311

Form of Antibody: Rabbit IgG in phosphate buffered saline (without Mg²⁺ and Ca²⁺), pH 7.4, 150mM NaCl, 0.02% sodium azide and 50% glycerol.

Storage/Stability: Store at -20°C/1 year

Immunogen: The antiserum was produced against synthesized peptide derived from Human AZGP1

Purification: The antibody was affinity-purified from rabbit antiserum by affinity-chromatography using epitope-specific immunogen.

Specificity/Sensitivity: AZGP1 antibody detects endogenous levels of total AZGP1 protein

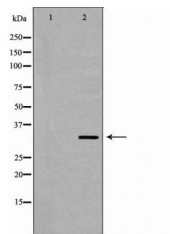
Reactivity: Human

Applications:

Predicted MW: 34kd

WB:1:500~1:2000

IHC:1:50-200



Western blot analysis of extracts of various celllines, using RAD51 antibody.

Background :

Zinc-alpha-2-glycoprotein (AZGP1) is a soluble protein normally found in body fluids, functions as a lipid mobilizing factor . It is known to be expressed in the secretory epithelia of the liver, lung, breast, GI tract and sweat glands, sharing significant structural similarity with the class I major histocompatibility complex (MHC) antigens . AZGP1 is involved in carcinogenesis and differentiation. Altered expression of AZGP1 has been reported in breast cancer, prostate cancer and lung adenocarcinoma, hepatocellular carcinoma, pancreatic carcinoma and oral tumors .