



## AIFM1 Antibody

#24163

**Catalog Number:** 24163-1, 24163-2

**Amount:** 50µg/50µl, 100µg/100µl

**Swiss-Prot No. :** O95831

**Form of Antibody:** Rabbit IgG in phosphate buffered saline (without Mg<sup>2+</sup> and Ca<sup>2+</sup>), pH 7.4, 150mM NaCl, 0.02% sodium azide and 50% glycerol.

**Storage/Stability:** Store at -20°C/1 year

**Immunogen:** The antiserum was produced against synthesized peptide derived from Human AIFM1

**Purification:** The antibody was affinity-purified from rabbit antiserum by affinity-chromatography using epitope-specific immunogen.

**Specificity/Sensitivity:** AIFM1 antibody detects endogenous levels of total AIFM1 protein

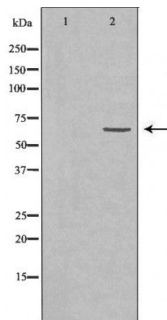
**Reactivity:** Human, Mouse, Rat

### Applications:

Predicted MW: 66kd

WB: 1:500~1:2000

IHC: 1:50-200



Western blot analysis of extracts of various cell lines, using AIFM1 antibody.

### Background :

This gene encodes a flavoprotein essential for nuclear disassembly in apoptotic cells, and it is found in the mitochondrial intermembrane space in healthy cells. Induction of apoptosis results in the translocation of this protein to the nucleus where it affects chromosome condensation and fragmentation. In addition, this gene product induces mitochondria to release the apoptogenic proteins cytochrome c and caspase-9. Mutations in this gene cause combined oxidative phosphorylation deficiency 6, which results in a severe mitochondrial encephalomyopathy. Alternative splicing results in multiple transcript variants. A related pseudogene has been identified on chromosome 10.