



ALDH1A1 Antibody

#24156

Catalog Number: 24156-1, 24156-2

Amount: 50µg/50µl, 100µg/100µl

Swiss-Prot No. : P00352

Form of Antibody: Rabbit IgG in phosphate buffered saline (without Mg²⁺ and Ca²⁺), pH 7.4, 150mM NaCl, 0.02% sodium azide and 50% glycerol.

Storage/Stability: Store at -20°C/1 year

Immunogen: The antiserum was produced against synthesized peptide derived from Human ALDH1A1

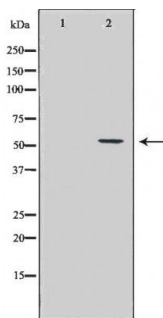
Purification: The antibody was affinity-purified from rabbit antiserum by affinity-chromatography using epitope-specific immunogen.

Specificity/Sensitivity: ALDH1A1 antibody detects endogenous levels of total ALDH1A1 protein

Reactivity: Human, Mouse, Rat

Applications:

Predicted MW: 55kd WB:1:500~1:2000 IHC:1:50-200



Western blot analysis of extracts of various cell lines, using ALDH1A1 antibody.

Background : The aldehyde dehydrogenase family is a large group of enzymes that oxidize aldehydes formed through metabolic processes to their carboxylic acids . ALDH1A1 is a liver cytosolic isoform of acetaldehyde dehydrogenase and is involved in the major pathway of alcohol metabolism along with alcohol dehydrogenase . ALDH1A1 is also known as retinal dehydrogenase 1 and is involved in retinol metabolism, converting retinol to retinoic acid . Recent studies suggest that control of retinoid signaling through ALDH1A1 may influence hematopoietic stem cell differentiation . There has been recent interest in ALDH1 isoforms as predictive biomarkers in disease. Several studies have suggested that ALDH1A1 is a potential marker for cancer stem cells and chemoresistance in several tumor types, such as melanoma , lung cancer , glioblastoma .