



ACPP Antibody

#24158

Catalog Number: 24158-1, 24158-2

Amount: 50µg/50µl, 100µg/100µl

Swiss-Prot No. : P15309

Form of Antibody: Rabbit IgG in phosphate buffered saline (without Mg²⁺ and Ca²⁺), pH 7.4, 150mM NaCl, 0.02% sodium azide and 50% glycerol.

Storage/Stability: Store at -20°C/1 year

Immunogen: The antiserum was produced against synthesized peptide derived from Human ACPP

Purification: The antibody was affinity-purified from rabbit antiserum by affinity-chromatography using epitope-specific immunogen.

Specificity/Sensitivity: ACPP antibody detects endogenous levels of total ACPP protein

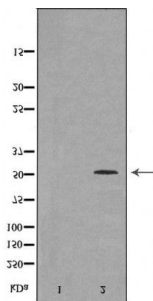
Reactivity: Human, Mouse, Rat

Applications:

Predicted MW: 48kd

WB: 1:500~1:2000

IHC: 1:50-200



Western blot analysis of extracts of MCF-7 cell line, using ACPP antibody.

Background : ACPP is also named as PAP (prostatic acid phosphatase), 5'-nucleotidase, thiamine monophosphatase and belongs to the histidine acid phosphatase family. This enzyme is a homodimeric glycoprotein with a subunit molecular mass of 50 kDa and is an androgen-stimulated secretory product of the human prostate gland. It is also a non-specific phosphatase and has been implicated in the progression of prostate cancer, which inactivates LPA in human seminal plasma. This protein has three glycosylation sites. This antibody is specific to ACPP.