



AREG Antibody

#24157

Catalog Number: 24157-1, 24157-2

Amount: 50µg/50µl, 100µg/100µl

Swiss-Prot No. : P15514

Form of Antibody: Rabbit IgG in phosphate buffered saline (without Mg²⁺ and Ca²⁺), pH 7.4, 150mM NaCl, 0.02% sodium azide and 50% glycerol.

Storage/Stability: Store at -20°C/1 year

Immunogen: The antiserum was produced against synthesized peptide derived from Human AREG

Purification: The antibody was affinity-purified from rabbit antiserum by affinity-chromatography using epitope-specific immunogen.

Specificity/Sensitivity: AREG antibody detects endogenous levels of total AREG protein

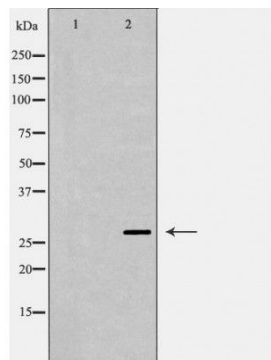
Reactivity: Human, Mouse, Rat

Applications:

Predicted MW: 28kd

WB: 1:500~1:2000

IHC: 1:50-200



Western blot analysis of extracts of various cell lines, using AREG antibody.

Background : Amphiregulin (AREG) is one of the ligands of the epidermal growth factor receptor (EGFR). AREG plays a central role in mammary gland development and branching morphogenesis in organs and is expressed both in physiological and in cancerous tissues. The AREG protein is synthesized as a 252-amino acid transmembrane precursor, pro-AREG. At the plasma membrane, pro-AREG is subjected to sequential proteolytic cleavages within its ectodomain and is then released as the soluble AREG protein. Depending on the cell type and microenvironment, AREG can be produced in multiple cellular and mature forms using alternative pro-AREG cleavage sites and glycosylation motifs.