



## ARSA Antibody

#24155

**Catalog Number:** 24155-1, 24155-2

**Amount:** 50µg/50µl, 100µg/100µl

**Swiss-Prot No. :** P15289

**Form of Antibody:** Rabbit IgG in phosphate buffered saline (without Mg<sup>2+</sup> and Ca<sup>2+</sup>), pH 7.4, 150mM NaCl, 0.02% sodium azide and 50% glycerol.

**Storage/Stability:** Store at -20°C/1 year

**Immunogen:** The antiserum was produced against synthesized peptide derived from Human ARSA

**Purification:** The antibody was affinity-purified from rabbit antiserum by affinity-chromatography using epitope-specific immunogen.

**Specificity/Sensitivity:** ARSA antibody detects endogenous levels of total ARSA protein

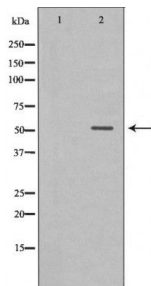
**Reactivity:** Human, Mouse, Rat

**Applications:**

Predicted MW: 54kd

WB: 1:500~1:2000

IHC: 1:50-200



Western blot analysis of extracts of various celllines, using ARSA antibody.

**Background :**

The protein encoded by this gene hydrolyzes cerebroside sulfate to cerebroside and sulfate. Defects in this gene lead to metachromatic leucodystrophy (MLD), a progressive demyelination disease which results in a variety of neurological symptoms and ultimately death. Alternatively spliced transcript variants have been described for this gene.