



## A2M Antibody

#24154

**Catalog Number:** 24154-1, 24154-2

**Amount:** 50µg/50µl, 100µg/100µl

**Swiss-Prot No. :** P01023

**Form of Antibody:** Rabbit IgG in phosphate buffered saline (without Mg<sup>2+</sup> and Ca<sup>2+</sup>), pH 7.4, 150mM NaCl, 0.02% sodium azide and 50% glycerol.

**Storage/Stability:** Store at -20°C/1 year

**Immunogen:** The antiserum was produced against synthesized peptide derived from Human A2M

**Purification:** The antibody was affinity-purified from rabbit antiserum by affinity-chromatography using epitope-specific immunogen.

**Specificity/Sensitivity:** A2M antibody detects endogenous levels of total A2M protein

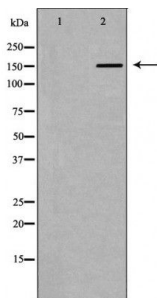
**Reactivity:** Human

**Applications:**

Predicted MW: 163kd

WB:1:500~1:2000

IHC:1:50-200



Western blot analysis of extracts of HepG2 cell lines, using A2M antibody.

**Background :**

Alpha-2-macroglobulin is a protease inhibitor and cytokine transporter. It inhibits many proteases, including trypsin, thrombin and collagenase. A2M is implicated in Alzheimer disease (AD) due to its ability to mediate the clearance and degradation of A-beta, the major component of beta-amyloid deposits.