



ALDOA Antibody

#24151

Catalog Number: 24151-1, 24151-2

Amount: 50µg/50µl, 100µg/100µl

Swiss-Prot No. : P04075

Form of Antibody: Rabbit IgG in phosphate buffered saline (without Mg²⁺ and Ca²⁺), pH 7.4, 150mM NaCl, 0.02% sodium azide and 50% glycerol.

Storage/Stability: Store at -20°C/1 year

Immunogen: The antiserum was produced against synthesized peptide derived from Human ALDOA

Purification: The antibody was affinity-purified from rabbit antiserum by affinity-chromatography using epitope-specific immunogen.

Specificity/Sensitivity: ALDOA antibody detects endogenous levels of total ALDOA protein

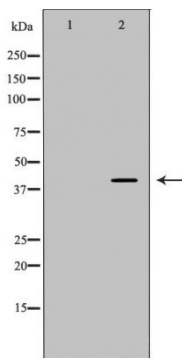
Reactivity: Human, Mouse, Rat

Applications:

Predicted MW: 39kd

WB: 1:500~1:2000

IHC: 1:50-200



Western blot analysis of HeLa cell and HepG2 cell lysate using ALDOA antibody.

Background :

Aldolase (fructose biphosphate aldolase), a glycolytic enzyme, catalyzes the conversion of fructose 1, 6-biphosphate to 3-phosphoglyceraldehyde. This ubiquitous enzyme is present as three different isozymes: aldolase A, aldolase B, and aldolase C. Studies suggest the potential diagnostic value of quantitative analysis of aldolase A for hepatocarcinoma . Furthermore, the change in aldolase B gene expression levels has also been observed in certain patients with this primary tumor .