



## ATRIP Antibody

#24143

**Catalog Number:** 24143-1, 24143-2

**Amount:** 50µg/50µl, 100µg/100µl

**Swiss-Prot No. :** Q8WXE1

**Form of Antibody:** Rabbit IgG in phosphate buffered saline (without Mg<sup>2+</sup> and Ca<sup>2+</sup>), pH 7.4, 150mM NaCl, 0.02% sodium azide and 50% glycerol.

**Storage/Stability:** Store at -20°C/1 year

**Immunogen:** The antiserum was produced against synthesized peptide derived from Human ATRIP

**Purification:** The antibody was affinity-purified from rabbit antiserum by affinity-chromatography using epitope-specific immunogen.

**Specificity/Sensitivity:** ATRIP antibody detects endogenous levels of total ATRIP protein

**Reactivity:** Human, Mouse, Rat

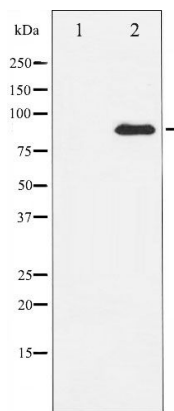
**Applications:**

Predicted MW: 80kd

WB: 1:500~1:2000

IHC: 1:50-200

IF/ICC: 1:100-500



Western blot analysis of ATRIP expression in NIH-3T3 whole cell lysates, The lane on the left is treated with the antigen-specific peptide.

**Background :**

ATRIP is required for checkpoint signaling after DNA damage. Required for ATR expression, possibly by stabilizing the protein.