



ATG4B Antibody

#24140

Catalog Number: 24140-1, 24140-2

Amount: 50µg/50µl, 100µg/100µl

Swiss-Prot No. : Q9Y4P1

Form of Antibody: Rabbit IgG in phosphate buffered saline (without Mg²⁺ and Ca²⁺), pH 7.4, 150mM NaCl, 0.02% sodium azide and 50% glycerol.

Storage/Stability: Store at -20°C/1 year

Immunogen: The antiserum was produced against synthesized peptide derived from Human ATG4B

Purification: The antibody was affinity-purified from rabbit antiserum by affinity-chromatography using epitope-specific immunogen.

Specificity/Sensitivity: ATG4B antibody detects endogenous levels of total ATG4B protein

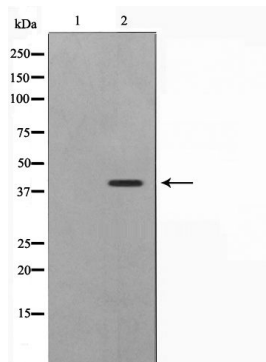
Reactivity: Human, Mouse

Applications:

Predicted MW: 44kd

WB: 1:500~1:2000

IHC: 1:50-200



Western blot analysis on Jurkat cell lysate using ATG4B Antibody

Background :

Autophagy is the process by which endogenous proteins and damaged organelles are destroyed intracellularly. Autophagy is postulated to be essential for cell homeostasis and cell remodeling during differentiation, metamorphosis, non-apoptotic cell death, and aging. Reduced levels of autophagy have been described in some malignant tumors, and a role for autophagy in controlling the unregulated cell growth linked to cancer has been proposed. This gene encodes a member of the autophagin protein family. The encoded protein is also designated as a member of the C-54 family of cysteine proteases. Two transcript variants that encode different isoforms were identified through sequence analysis.