



#24130

**Catalog Number:** 24130-1, 24130-2

**Amount:** 50µg/50µl, 100µg/100µl

**Swiss-Prot No. :** P31749

**Form of Antibody:** Rabbit IgG in phosphate buffered saline (without Mg<sup>2+</sup> and Ca<sup>2+</sup>), pH 7.4, 150mM NaCl, 0.02% sodium azide and 50% glycerol.

**Storage/Stability:** Store at -20°C/1 year

**Immunogen:** The antiserum was produced against synthesized peptide derived from Human AKT1

**Purification:** The antibody was affinity-purified from rabbit antiserum by affinity-chromatography using epitope-specific immunogen.

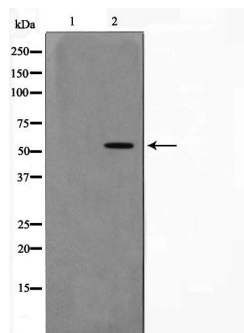
**Specificity/Sensitivity:** AKT1 antibody detects endogenous levels of total AKT1 protein

**Reactivity:** Human, Mouse, Rat

**Applications:**

Predicted MW: 55kd

WB: 1:500~1:2000



Western blot analysis on 293 cell lysate using AKT1 Antibody

**Background :**

an AGC kinase that plays a critical role in controlling the balance between survival and apoptosis. Phosphorylated and activated by PDK1 in the PI3 kinase pathway. Mediates survival signals downstream of PI3 kinase and several growth factor receptors by phosphorylating apoptotic proteins. First found in a mouse transforming retrovirus. Tumorigenic in a mouse lymphoma model and activated (by phospho-Akt staining) and/or overexpressed in a number of cancers including breast, prostate, lung, pancreatic, liver, ovarian and colorectal. Inhibitor: RX-0201. Substrates include tuberlin, Bad, Forkhead transcription factors, caspase-9, and glycogen synthase kinase-3.