



Epsilon Tubulin (2B3)

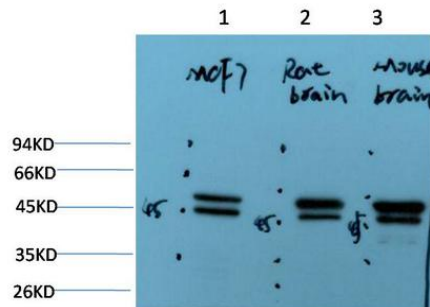
Mouse monoclonal Antibody

#55030

Catalog Number: 55030**Amount:** 100µg/100µl**Swiss-Prot No. :** Q9UJTO**GENE ID:** 51175**Form of Antibody:** Purified mouse monoclonal in buffer containing 0.1M Tris-Glycine (pH 7.4, 150 mM NaCl) with 0.2% sodium azide, 50% glycerol**Storage/Stability:** Store at -20°C/1 year**Purification:** affinity-chromatography**Specificity/Sensitivity:** This antibody detects endogenous levels of Epsilon Tubulin and does not cross-react with related proteins**Alternative Names:** Tubulin epsilon chain (Epsilon-tubulin)**Reactivity:** Human, Mouse, Rat**Applications:**

Predicted MW: 55kd

WB: 1:1000-2000



Western blot analysis of 1) MCF7 Cell Lysate, 2) Rat Brain Tissue Lysate, 3) Mouse Brain Tissue Lysate using Epsilon Tubulin Mouse mAb

Background:

This gene encodes a member of the tubulin superfamily. This protein localizes to the centriolar sub-distal appendages that are associated with the older of the two centrioles after centrosome duplication. This protein plays a central role in organization of the microtubules during centriole duplication. A pseudogene of this gene is found on chromosome 5.