



LaminaA

Mouse monoclonal Antibody

#53618

Catalog Number: 53618

Amount: 100µg/100µl

Swiss-Prot No. : P02545

Gene name: Imna

Gene id: 4000

Clone Number: 3D6-F4-B7

Form of Antibody: Purified mouse monoclonal in buffer containing 0.1M Tris-Glycine (pH 7.4, 150 mM NaCl) with 0.2% sodium azide, 50% glycerol

Storage/Stability: Store at -20°C/1 year

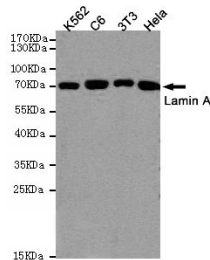
Immunogen: Purified recombinant human LaminaA protein fragments expressed in E.coli

Purification: affinity-chromatography

Specificity/Sensitivity: This antibody detects endogenous levels of LaminaA and does not cross-react with related proteins

Reactivity: Human, Mouse, Rat

Applications: Predicted MW: 74kd WB: 1:1000



Western blot detection of Lamin A in K562, C6, 3T3 and HeLa cell lysates using Lamin A mouse mAb (1:1000 diluted). Predicted band size: 74kDa. Observed band size: 74kDa.

Background:

The nuclear lamina consists of a two-dimensional matrix of proteins located next to the inner nuclear membrane. The lamin family of proteins make up the matrix and are highly conserved in evolution. During mitosis, the lamina matrix is reversibly disassembled as the lamin proteins are phosphorylated. Lamin proteins are thought to be involved in nuclear stability, chromatin structure and gene expression. Vertebrate lamins consist of two types, A and B. Alternative splicing results in multiple transcript variants. Mutations in this gene lead to several diseases: Emery-Dreifuss muscular dystrophy, familial partial lipodystrophy, limb girdle muscular dystrophy, dilated cardiomyopathy, Charcot-Marie-Tooth disease, and Hutchinson-Gilford progeria syndrome.