



Merlin (Ab-518) Antibody

#21258

Catalog Number: 21258-1, 21258-2

Amount: 50µg/50µl, 100µg/100µl

Swiss-Prot No. : P35240

Form of Antibody: Rabbit IgG in phosphate buffered saline (without Mg²⁺ and Ca²⁺), pH 7.4, 150mM NaCl, 0.02% sodium azide and 50% glycerol.

Storage/Stability: Store at -20°C/1 year

Immunogen: The antiserum was produced against synthesized non-phosphopeptide derived from Human Merlin around the phosphorylation site of serine 518 (R-L-S^P-M-E).

Purification: The antibody was affinity-purified from rabbit antiserum by affinity-chromatography using epitope-specific immunogen.

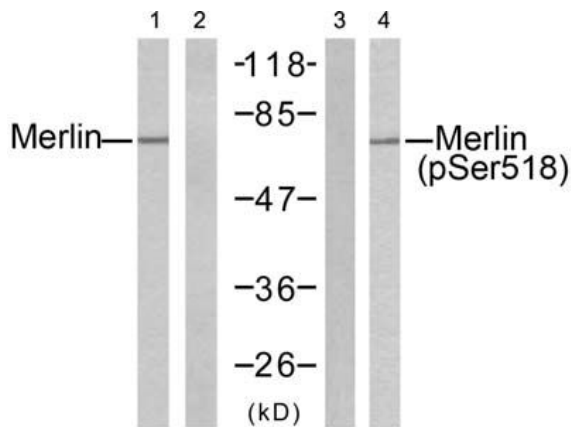
Specificity/Sensitivity: Merlin (Ab-518) antibody detects endogenous levels of total Merlin protein.

Reactivity: Human, Mouse, Rat

Applications:

Predicted MW: 69 kd

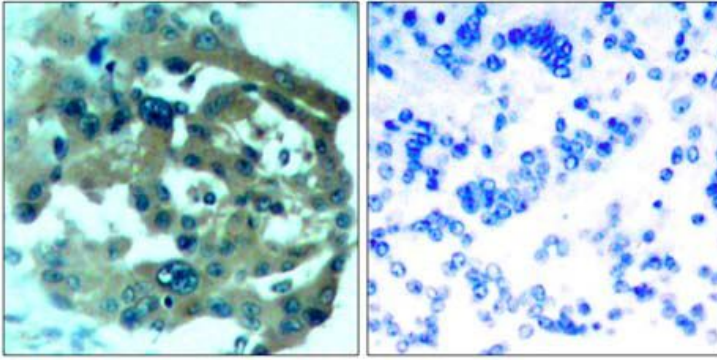
WB : 1:500~1:1000 IHC: 1:50~1:100



IFN- α - - - +

Peptide - + - -

Western blot analysis of extracts from HUVEC cells untreated or treated with IFN- α (100ng/ml, 15min), using Merlin (Ab-518) antibody (#21258, Line 1 and 2) and Merlin (phospho-Ser518) antibody (#11266, Line 3 and 4).



Peptide - +

Immunohistochemical analysis of paraffin-embedded human lung carcinoma tissue, using Merlin (Ab-518) antibody (#21258).

Background :

Probable regulator of the Hippo/SWH (Sav/Wts/Hpo) signaling pathway, a signaling pathway that plays a pivotal role in tumor suppression by restricting proliferation and promoting apoptosis. Along with WWC1 can synergistically induce the phosphorylation of LATS1 and LATS2 and can probably function in the regulation of the Hippo/SWH (Sav/Wts/Hpo) signaling pathway. May act as a membrane stabilizing protein. May inhibit PI3 kinase by binding to AGAP2 and impairing its stimulating activity.

References:

- Guang-Hui Xiao, et al. (2005) Mol. Cell. Biol ; 25: 2384 - 2394.
- Hi-Su Yang, et al. (2006) Cancer Res ; 66: 2708 - 2715.
- R Bohni, et al. (1994) J. Biol. Chem ; 269: 14541 - 14545.
- Adam J. Ratner, et al. (2001) J. Biol. Chem ; 276: 19267 - 19275.