



CREB (Ab-133) Antibody

#21052

Catalog Number: 21052-1, 21052-2

Amount: 50 μ g/50 μ l, 100 μ g/100 μ l

Swiss-Prot No. : P16220

Form of Antibody: Rabbit IgG in phosphate buffered saline (without Mg²⁺ and Ca²⁺), pH 7.4, 150mM NaCl, 0.02% sodium azide and 50% glycerol.

Storage/Stability: Store at -20°C/1 year

Immunogen: The antiserum was produced against synthesized non-phosphopeptide derived from human CREB around the phosphorylation site of serine 133 (R-P-S_P-Y-R).

Purification: The antibody was affinity-purified from rabbit antiserum by affinity-chromatography using epitope-specific immunogen

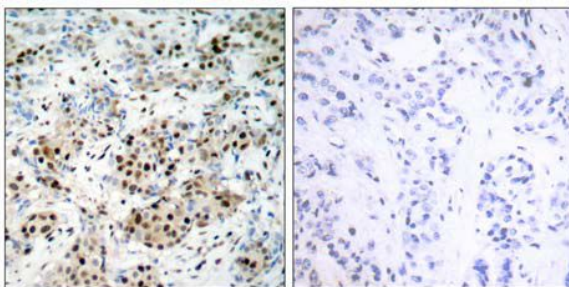
Specificity/Sensitivity: CREB (Ab-133) antibody detects endogenous levels of total CREB protein, and it also detects the CREB-related protein, ATF-1

Reactivity: Human, Mouse, Rat

Applications:

Predicted MW: 43kd

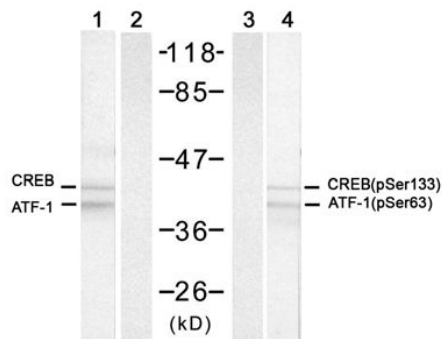
WB: 1:500~1:1000 IHC: 1:50~1:100



Peptide -

+

Immunohistochemical analysis of paraffin-embedded human breast carcinoma tissue using CREB (Ab-133) antibody (#21052).



PMA + + - +

Peptide - + - -

Western blot analysis of extracts from HeLa cells using CREB (Ab-133) antibody (#21052, Lane 1 and 2) and

CREB (phospho-Ser133) antibody (#11052, Lane 3 and 4)

Background :

This protein binds the cAMP response element (CRE), a sequence present in many viral and cellular promoters. CREB stimulates transcription on binding to the CRE. Transcription activation is enhanced by the TORC coactivators which act independently of Ser-133 phosphorylation. Implicated in synchronization of circadian rhythmicity

References:

- Xing J, et al. (1998) Mol Cell Biol 18(4): 1946-55.
 Tan Y, et al. (1996) EMBO J; 15(17): 4629-42.
 Hao, M. et al. (1996) J. Biol. Chem. 271, 29380-29385.
 Mayo LD, et al. (2001) Biol Chem; 276(27): 25184-9.
 Lu, H. et al. (1997) Mol. Cell. Biol. 17, 5923-5934