



## CREB (Ab-129) Antibody

#21265

**Catalog Number:** 21265-1, 21265-2

**Amount:** 50  $\mu$ g/50  $\mu$ l, 100  $\mu$ g/100  $\mu$ l

**Swiss-Prot No. :** P16220

**Form of Antibody:** Rabbit IgG in phosphate buffered saline (without Mg<sup>2+</sup> and Ca<sup>2+</sup>), pH 7.4, 150mM NaCl, 0.02% sodium azide and 50% glycerol.

**Storage/Stability:** Store at -20°C/1 year

**Immunogen:** The antiserum was produced against synthesized non-phosphopeptide derived from human CREB around the phosphorylation site of serine 129 (I-L-Sp-R-R).

**Purification:** The antibody was affinity-purified from rabbit antiserum by affinity-chromatography using epitope-specific immunogen

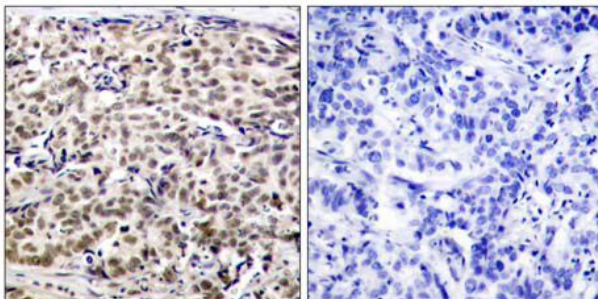
**Specificity/Sensitivity:** CREB (Ab-129) antibody detects endogenous levels of total CREB protein

**Reactivity:** Human, Mouse, Rat

### Applications:

Predicted MW: 43kd

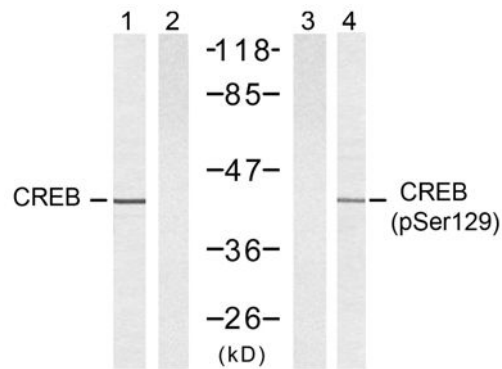
WB: 1:500~1:1000 IHC: 1:50~1:100



Peptide - +

Immunohistochemical analysis of paraffin-embedded

human breast carcinoma tissue using CREB (Ab-129) antibody (#21265).



UV - - - +

Peptide - + - -

Western blot analysis of extracts from 293 cells untreated or treated with UV, using CREB (Ab-129) antibody

(#21265, Lane 1 and 2) and CREB (phospho-Ser129)

antibody (#11273, Lane 3 and 4).

### Background :

This protein binds the cAMP response element (CRE), a sequence present in many viral and cellular promoters. CREB stimulates transcription on binding to the CRE. Transcription activation is enhanced by the TORC coactivators which act independently of Ser-133 phosphorylation. Implicated in synchronization of circadian rhythmicity

### References:

Chrystelle V. Garat, et al. (2006) Mol. Cell. Biol ; 26: 4934 - 4948.

Lilah Rothen, et al. (2004) Mol. Pharmacol ; 66: 1536 - 1543.

Darren R. Tyson, et, al. (2002) Endocrinology; 143: 674.

Kyung-Woo Park, et al. (2003) Arterioscler. Thromb. Vasc. Biol ; 23: 1364.