



# STAT3 (Ab-727) Antibody

#21046

**Catalog Number:** 21046-1, 21046-2

**Amount:** 50µg/50µl, 100µg/100µl

**Swiss-Prot No. :** P40763

**Form of Antibody:** Rabbit IgG in phosphate buffered saline (without Mg<sup>2+</sup> and Ca<sup>2+</sup>), pH 7.4, 150mM NaCl, 0.02% sodium azide and 50% glycerol.

**Storage/Stability:** Store at -20°C/1 year

**Immunogen:** The antiserum was produced against synthesized non-phosphopeptide derived from human STAT3 around the phosphorylation site of serine 727 (P-M-S<sub>P</sub>-P-R).

**Purification:** The antibody was affinity-purified from rabbit antiserum by affinity-chromatography using epitope-specific immunogen.

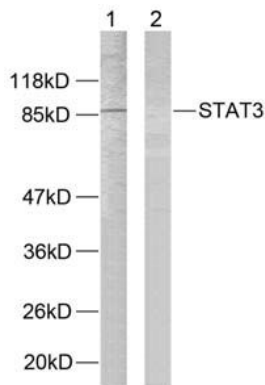
**Specificity/Sensitivity:** STAT3 (Ab-727) antibody detects endogenous levels of total STAT3 protein

**Reactivity:** Human, Mouse, Rat

**Applications:**

Predicted MW: 88 kd

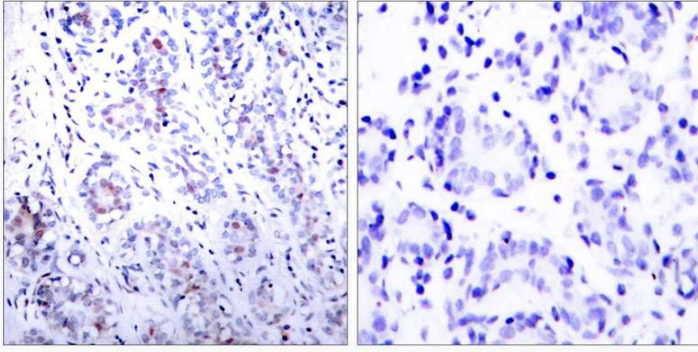
WB: 1:500~1:2000 IHC: 1:50~1:200



Peptide - +

Western blot analysis of extracts from HeLa cells using

STAT3 (Ab-727) antibody (#21046).



Peptide - +

Immunohistochemical analysis of paraffin- embedded

human breast carcinoma tissue using STAT3 (Ab-727)

antibody (#21046).

**Background :**

Transcription factor that binds to the interleukin-6 (IL-6)-responsive elements identified in the promoters of various acute-phase protein genes. Activated by IL31 through IL31RA

**References:**

- Heim M H, (1999) J Recept Signal Transduct Res. 19: 75-120.
- Takeda K, et al. (1997) Proc Natl Acad Sci USA. 94: 3801-3804.
- Catlett-Falcone R, et al. (1999) Immunity. 10: 105-115.
- Garcia R, et al. (1998) J Biomed Sci. 5: 79-85.
- Bromberg J F, et al. (1999) Cell. 98: 295-303